

Better Homes and Gardens Special Interest Publications

Beautiful KITCHENS & Baths™

Easy
Elegance
It's All in
the Details

BHG SIP Orange Checkout

Spring 2011
Display until June 7

\$7.99 U.S.



KitchenBathIdeas.com

Dressing Rooms: The Ultimate Luxury p. 24
Capture the Warmth of Tuscan Style p. 19



This Photo: Various countertop heights accommodate food prep for three cooks, who also enjoy top-of-the-line appliances, including a commercial wood-burning oven. **Opposite:** A chemical wash on the steel range hood and some island cabinets blacked the surfaces and created some contrast. "It creates an antique patina with lots of variations in color," designer Gioi Tran says. "Grays, deep greens, bronze ... it's not one solid color."



into the woods

Fine craftsmanship showcases an artful blend of natural and manmade materials in this spacious California kitchen.

Writer: Jan Soultis Walker Photographer: Paul Dyer Field Editor: Sarah Alba



Spaciousness is a valued commodity in any home, but an extra-large kitchen poses a particular challenge in terms of efficiency and intimacy.

For this 400-square-foot kitchen in Orinda, California, designer Gioi Tran turned to nature and a pair of islands to make the space comfortable for a couple and their teenage son—all gourmet cooks.

"The danger in designing an exceptionally large kitchen is that you can end up with too much of a good thing," Tran says. "By mixing natural and manmade materials, you provide contrast and texture that create visual interest—but with subtlety, not overwhelming expanses of one material."

Selecting materials that make a studied connection to the outdoors was easy, given the kitchen's large, seamless windows. Fully-retractable window walls literally erase the separation between the lush 25-acre setting and the work core.

The work core itself demanded creative problem solving to make the supersize space convenient for cooking. "When I came on the scene, one big island was planned for the center of the room, which would have become a barrier," Tran says. "I split it into two facing islands and designed them with angles, different materials, and variable countertop heights."



Left: Removable wood platforms rest on open shelves to accommodate an ever-changing display of treasures. **This Photo:** Oak, birch, bamboo, and maple were all considered for the cabinets but were too yellow for the desired warm, earthy look. Ultimately, the homeowners decided on a combination of eucalyptus and walnut. Precision craftsmanship is especially evident where wood corners meet perfectly.



This Photo: A pair of wine refrigerators and a window wall that retracts make a lovely spot to enjoy a glass of wine and the California countryside. **Opposite Left:** Stripping paint from the original beams running the length of the kitchen revealed handsome, rustic wood. Adding crosswise beams eliminated the bowling alley effect and created a visually appealing grid. **Opposite Right:** At \$35–\$40 per square foot, the limestone flooring—which runs throughout the house—was a significant investment but prized for its visible fossils and subtle variations.



For cabinetry, the homeowners wanted the look of simple, modern furnishings. "The kitchen is very complex in execution," Tran says, "because there is no trim or molding to hide gaps. Everything required the highest level of precision craftsmanship. If you look closely, it really is like a work of art."

Tran specified two woods—eucalyptus and walnut—with notable vertical graining that he opted to run horizontally throughout the room. "Using beautiful contrasting materials, such as two woods, prevents the kitchen from becoming monochromatic," Tran says. Darkened steel adds dramatic punches of bronze and black to some sections of cabinetry, culminating as a focal point in the hood above the range.

Countertops provide another connection to nature and are made of honed granite and quartz complemented by intricate, veined limestone on the backsplashes. "We didn't want polished stone because it looks manmade," Tran says. "Also, honed surfaces have tactile appeal."

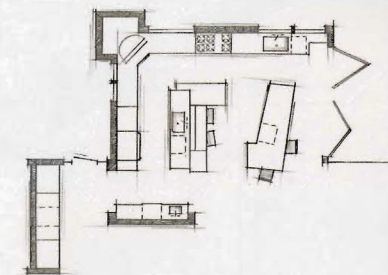
Tran chose limestone flooring because it feels good underfoot, with each tile offering a microcosm of nature. "The flooring was expensive, but nothing else gave us the subtlety of color and the geological interest of visible fossils," Tran says. "They loved it so much, it continues throughout the entire house."

It's this kind of understated detailing that Tran finds most appealing about the kitchen. "I still enjoy visiting this space," he says. "I love that it isn't one-dimensional. Every time I go in, I see something unique to enjoy."

RESOURCES BEGIN ON PAGE 116

Lessons Learned

To discover whether designer Gioi Tran's dual-island floor plan would work well for their cooking style, the homeowners had a full-size model constructed within the kitchen footprint. Their carpenter used drywall and plywood, but you could create mock elevations using cardboard. Another option is to outline the layout on the floor using duct tape and "walk through" your daily routines.





Opposite: Sandblasting gave the granite counters a compelling texture. A commercial pullout faucet teams with a large undermount sink for easy cleanup. **Left:** Designer Gioi Tran, who views a project in terms of complementary vertical and horizontal planes, chose the highly patterned limestone to balance the subtle tones of the honed quartz countertop.

Designer Insights



Recognized for his expertise in blending natural and manmade materials, San Francisco designer Gioi Tran shares insights on his signature look.

What draws you to mixing natural and manmade materials?

Especially in large spaces, balancing a room with natural, earthy tones juxtaposed with manmade elements provides visual interest. The contrasts are subtle, but on some level you understand they are present.

Any suggestions for someone who wants to experiment with mixing materials?

I don't view a kitchen as disparate parts—cabinets, countertops, floor, backsplash. Instead, I view the space in

terms of vertical and horizontal planes. Consider which planes you want to emphasize and which should be more understated. When you design with this larger picture in mind, the results are more likely to be cohesive and integrated.

Are there other combinations of materials you like to use?

It changes from year to year. Currently, I like to include elements that are unexpected, and I like to push my limits and the limits of my clients—maybe introducing a gray cabinet against a warm brown wall color. I'm doing a very clean European kitchen with an island that is an antique. Surprises like these keep a space interesting for years to come.

RESOURCES

For further information about products or professionals featured in *Beautiful Kitchens & Baths*™ magazine, please contact these sources. Addresses and phone numbers have been verified, but we cannot guarantee availability of items or services.

Key

[T] To The Trade. Not available to the general public. Contact a design professional for help. [P] Paint Color. Paint colors depicted may vary from manufacturers' colors. Use names or numbers as a starting point. To get the exact color you see, take the page to a paint retailer.

Pages 16-17

SKY-HIGH ESCAPE

Interior designer: Joshua Cain, Savory Design • 5401, Burbank, California; 818/848-2084; savorydesignbuild.com.
Calacatta marble tile—GFI Tile & Stone, Inc., Costa Mesa, California; 949/667-1890; gttile.com. **Bath tub, bath fixtures, and sink fixtures** from the Michael Smith collection—Kallista; 888/452-6547; kallista.com. **Vanity** custom design—D. Christian, Chino, California; 909/517-3200; dchristian.com. **Decorative vanity panels and legs**—Enkebol Designs, Inc.; 800/745-5507; enkebol.com. **Vanity hardware**—Restoration Hardware; 800/910-9630; restorationhardware.com. **Medicine cabinet with mirror**—Robem, Inc.; 800/877-2376; robem.com. **Sconces**—C.L. Sterling and Son, Niantic, Connecticut; 860/739-2720; sterling.com. **Vanity chair**—Charles & Charles, Los Angeles; 310/559-0138; charlesandcharles.com [T]. **Fabric for vanity chair, drapery rods**—Robert Allen Home; 800/333-3177; robertallenhome.com [T]. **Armchair at window**—F. Schumacher & Co.; 800/332-3394; fshumacher.com [T]. **Floor lamp**—through Reborn Antiques, Los Angeles; 310/269-7785. **Fabric for drapery**—Stroheim & Romann; 800/974-8444; stroheim.com [T]. **Roman shades**—Superior Design Products, Tampa; superiordesignproducts.com. **Chandelier**—Curry & Co., Atlanta; 678/533-1500; curryco.com. **Painting above bathtub** by David Dibble—represented by Michael Hollis Fine Art, South Pasadena, California; 626/441-4333; hollisgallery.com.

Pages 19-23

TIMELESS TUSCAN

Architecture firm: Ray Ketzel and Jerry Goodman, Ketzel & Goodman, 1215 De la Vina St., Santa Barbara, CA 93101; 805/962-0655.
Contractor: RHC Builders, Inc., 2070 Creekside Rd., Santa Barbara, CA 93108; 805/565-8957.
Cabinetry knotty alder—Unlimited Wood Design, Newbury Park, California; 805/376-3002. **Island butcher-block countertop**—John Boos & Co.; Effingham, Illinois; 217/347-7701; johnboos.com. **Perimeter countertops** giallo acid-wash slab granite—Stonecraft International, Inc., Ventura, California; 805/648-5241; stonecraftintl.com. **Cabinet hardware**—Restoration Hardware; 800/910-9630; restorationhardware.com. **Sink faucet**—Newport Brass, a division of BrassTech, Santa Ana, California; 949/417-5207; brassitech.com. **Refrigerator integrated with cabinetry**—Sub-Zero, Inc.; 800/222-7820; subzero.com. **Cooktop**—Wolf Appliance, Inc.; 800/332-9513; wolfappliance.com. **Ovens**—Thermador; 800/735-4328; thermador.com.

Pages 24-27

PRACTICAL LUXURY

Professional interior design: Teri Duffy, T. Duffy & Associates, 440 Highbrook Dr., Atlanta, GA 30342; 404/843-8800; teriduffyandassociates.com.

Pages 28-31

SETTING THE MOOD

Interior designer: Dawn Davidson, Design Line Interiors, Inc., 1332 Camino Del Mar, Suite A, Del Mar, CA 92014; 858/309-6100; designlineinteriors.com. **Cabinetry**—Larry Wilson, Wilson's Custom Design, Oceanside, California; 760/721-1009. **Cabinet hardware, lighting, towel bars**—Steven Handelman Studios, Santa Barbara; 805/962-5119; stevenhandelmanstudios.com. **Countertops, shower surround**—Ceramic Tile Pour La Maison, Anaheim, California; 714/772-2626. **Flooring**—Richard Marshall Fine Flooring, Inc.; 800/669-5961; richardmarshall.com. **Sinks, tub**—American Faucet & Castings Corp.; 800/990-2284; afccorp.net. **Faucets for sink, tub, and shower fixtures** from the Reserve collection—SIGMA Designer Faucetry; 877/621-8383; sigmafauet.com. **Windows**—Architectural Traditions, Tucson, Arizona; 620/574-7374; architecturaltraditions.com. **Window treatments**—Design Line Interiors, Inc., Del Mar, California; 858/309-6100; designlineinteriors.com. **Mirrors**—Tony's Custom Framing, San Diego; 619/693-0433; tonyscustomframing.com.

Pages 32-37

MADE TO ORDER

Kitchen design: Charles Snyder, Kitchens by Deane, 1267 E. Main St., Stamford, CT 06902; 203/327-7008; kitchensbydeane.com. **Interior designer:** Angela Smith, A. Smith Design, Orange, Connecticut; 203/913-6584; angelsmithdesign@gmail.com. **Cabinetry, island countertop** stained walnut—

through Kitchens by Deane, 1267 E. Main St., Stamford, CT 06902; 203/327-7008; kitchensbydeane.com. **Perimeter countertop** Calacatta marble—New England Stone; 800/229-7866; newenglandstone.com. **Cabinet hardware**—Merit Metal Products, Warrington, Pennsylvania; 215/343-2600; meritmetal.com. **Tile at stove niche** Cracked Subway Tile in white—through Klawfs; 800/552-3371; klawfs.com. **Sink at island** #K-6546-40—Kohler Co.; 800/456-4537; us.kohler.com. **Sink faucet** Towson Gantry—Waterstone Co.; 888/504-0680; waterstoneco.com. **Refrigerator integrated with cabinetry** #736TCI, wine cooler #427R, icemaker integrated with cabinetry #3151—Sub-Zero, Inc.; 800/222-7820. **Cooktop**—SRT4866, double oven #D030F—Wolf Appliance, Inc.; 800/332-9513; wolfappliance.com. **Range hood** #PK45—Best By Brown, in the United States; 800/558-1711; in Canada: 877/696-1119; bestbybrown.com. **Pizza oven**—Earth's Stone Wood-Fire Ovens; 800/840-4915; earthsstoneovens.com. **Dishwashers integrated with cabinetry** #D3250A, #ASKO Appliance; 800/367-2444; asko.com. **Pendant lighting at island** #ELG75FN—Hudson Valley Lighting, Inc.; 800/814-3993; hudsonvalleylighting.com. **Chandelier at dining table** #CHC1444AB—Chart House by Visual Comfort, Houston; 713/686-5999; visualcomfort.com [T]. **Floor stain mahogany**—Minwax; 800/523-9299; minwax.com. **Kitchen counter stools**—Stickley Audi & Co., White Plains, New York; 914/948-6333; stickley.com. **Dining table and chairs**—Contemporary Home Interiors, West Hartford, Connecticut; 860/238-5856.

Pages 38-45

RUSTIC REFINEMENT

Interior designer: Tamara O'Horgan, allied ASID, Tamara O'Horgan Interiors, 603 N. Coast Hwy 101, Suite J, Solana Beach, CA 92075; 858/481-8034; ohorganinteriors.com. **Cabinetry**—Francis and Wane, Inc., Palm Desert, California; 760/568-9673; francisandwane.com. **Cabinet hardware**—Jacqueline Nicolas Architectural Imported Hardware, Corona Del Mar, California; 949/644-5543; jnicolas.com. **Beams**—Vintage Timberworks, Inc., Temecula, California; 951/695-1003. **Sink, perimeter and matching island countertops** beammarble limestone, custom fabrication—Impression, Torrance, California; 310/618-1299; limestone.com. **Backsplash at range** 19th-century antique iron fireback—Exquisite Surfaces, Los Angeles; 310/659-4580; xsurfaces.com. **Wall and backsplash** Texas limestone veneer, flooring—French ochre paille/le in herringbone pattern—Modern Builders Supply, Inc., San Marcos, California; 760/591-4570; modernbuilders.net. **Refrigerator**—Jenn-Air; 800/688-1100; jennair.com. **Range**—La Cornue, through Purcell Murray Co.; 800/892-4040; purcellmurray.com. **Sink faucet, pot filler at range**—Rohr; 800/777-

9762; rohrhome.com. **Dishwasher**—KitchenAid; kitchenaid.com. **Decorative plate on range hood**—Bellini's Antique Italia, Solana Beach, California; 858/509-9399; belliniimports.com. **Forged shelf brackets**—Patrick Pusateri, Pusateri Design; pusateridesign.com. **Farmhouse table** custom—through Tamara O'Horgan Interiors, Solana Beach, California; 858/481-8034; ohorganinteriors.com. **Wicker dining chairs**—Les Interieur, Newport Beach, California; 949/650-7803. **Fabric for chair cushions**—Mimi London, West Hollywood, California; 310/855-2567 [T]. **Fabrication of cushions**—Susan Hart Henegar, Susan Hart Henegar Tapestries and Custom Textiles; susanharthenegar.com; hartsus@me.com. **Wall paint** Magnolia #DEW322—Dunn-Edwards Paints; 888/337-2468; dunnsd.com [P]. **Chandelier at table**—Chandisier, Encinitas, California; 760/942-5408; chandisierlighting.com. **White dinnerware, green, tan, and yellow jugs, French sign at sink, copper pots**—C'est La Vie Antiques, Encinitas, California; 760/944-5244; cestivantiques.com. **Table runner**—Solo, Solana Beach, California; 858/794-6016. **Large white bowl, bread board, white platter**—Karen Harlow for the Home, Palm Desert, California; 760/674-4663; karenharlowforthehome.com. **Antique doors in china hutch**—Lyman Drake Antiques, Santa Ana, California; 714/879-2811; lymandrakeantiques.com.

Pages 46-53

DRAMA QUEEN

Designers: Patricia Georgio and Rosemary Thomas, Town and Country Design Group, 287 Bowman Ave., Purchase, NY 10577; 914/417-4668. **Kitchen designer:** Kathy Conroy, senior designer, Christopher Peacock Cabinetry, 2 Dearfield Dr., Greenwich, CT 06830; 203/862-9333; peacockcabinetry.com. **Interior designer:** Wendy Klingensmith, W.K. Smith Interiors, Rye, New York; 914/420-7246. **Builder:** Giorgio Custom Builders, 287 Bowman Ave., Purchase, NY 10577; 914/417-4666. **Cabinetry, backsplash tile, and countertop** honed Calacatta gold marble, cabinet hardware—Christopher Peacock Cabinetry, Greenwich, Connecticut; 203/862-9333; peacockcabinetry.com. **Wall and cabinet paint** custom—Christopher Peacock Paint; 866/539-9260; peacockpaint.com [P]. **Cooktop**—Wolf Appliance, Inc.; 800/332-9513; wolfappliance.com. **Refrigerator**—Sub-Zero, Inc.; 800/222-7820; subzero.com. **Sink**—Kohler Co.; 800/456-4537; us.kohler.com. **Faucet**—Rohr; 800/777-9762; rohrhome.com. **Dining table and chairs, decorative stands by dining area**—Peacock & Bowls, Greenwich, Connecticut; 203/861-3540; peacockandbowls.com. **Ceiling fixtures**—Remains Lighting, New York City; 212/675-8051; remains.com. **Wood stools**—Little Bird Furniture, Norwalk, Connecticut; 866/291-8918; littlebirdfurniture.com.

Metal stools—Sundance Catalog Co.; 800/422-2770; sundancescatalog.com. **Scale set in island**—Frankie Kitchen Systems Division; 800/626-5771; frankiesd.com. **Trays on island, silver tray by sink**—Target Stores; 800/800-8800; target.com (product line varies). **Orange pots with herbs**—Adams Fairacre Farms, Newburgh, New York; 845/569-0303; adamsfarms.com. **Glass pitcher and glasses**—Lounge Furniture, High Falls, New York; 845/887-9463; loungefurniture.com. **Flooring**—Phoenix Floors, Norwalk, Connecticut; 203/845-8094; phoenixfloors.com.

Pages 54-59

EFFORTLESS ELEGANCE

Kitchen designer: Jodi Caden, Caden Design Group, 1020 S. Old Woodward Ave., Birmingham, MI 48009; 248/203-6006; cadenesigngroup.com. **Cabinetry custom design**—Jodi Caden, Caden Design Group, Birmingham, Michigan; 248/203-6006; cadenesigngroup.com. **Range, ovens, warming drawer**—Viking Range Corp.; 888/845-4641; vikingrange.com. **Microwave oven**—Thermador; 800/735-4328; thermador.com. **Refrigerators, refrigerator and freezer drawers integrated with cabinetry**—Sub-Zero, Inc.; 800/222-7820; subzero.com. **Sink at island, sink at perimeter**—Bates & Bates; 800/726-7680; batesandbates.com. **Faucet at island sink**—Herbeau Creations of America; 800/547-1608; herbeau.com. **Faucet at perimeter sink**—Perrin & Rowe, presented by Rohr; 800/777-9762; rohrhome.com. **Tile at oven niche** Subway Tile in French White—Ann Sacks; 800/278-8453; annsacks.com. **Mixer**—KitchenAid; kitchenaid.com. **Pendant lights**—Urban Archaeology; 212/431-4646; urbanarchaeology.com.

Pages 60-67

INTO THE WOODS

Designer-builder: James Rogers, Concept Development, 42 Donald Dr., Orinda, CA 94563; 510/406-3217. **Interior designer:** Giori Tran, ASID, NKBA, Applegate Tran Interiors, 680 Eighth St., Suite 280, San Francisco, CA 94103; 415/487-1241; apologatran.com. **Light wood cabinetry** custom eucalyptus, dark wood cabinetry walnut—Mueller Nicholls, Inc., Oakland, California; 510/444-5000; mnbuilt.com. **Cabinet hardware**—Rocky Mountain Hardware; 888/788-2013; rockymountainhardware.com. **Perimeter countertop** Rosemary #2740—CaesarsStone US; 877/977-2789; caesarsstoneus.com. **Island countertops** seafoam green granite—Integrated Resources Group, Inc., Brisbane, California; 415/657-0280; marblecompany.com. **Fabrication and installation of island countertop, floor installation**—New Century Marble & Granite, San Leandro, California; 510/347-1818; nckb.com. **Flooring** honed limestone in light suede—Ann Sacks; 800/278-

For the best service, selection and value, go to the source...

BRANDSOURCE.



BRANDSOURCE® has everything you need to make your house a home: Top name Appliances, Electronics, Bedding, Furniture, and Bath Fixtures and much more!

visit:
bestvalue.brandsource.com
for store locations and special offers

8453; **amnsacks.com**. **Butcher-block countertop at island**—Spekva USA, Inc.; Alesia; 404/588-4607; spekva.us. **Refrigerator, cooktop**—Thermador; 800/735-4326; thermador.com. **Ovens**—Miele, Inc.; 800/463-0260; miele.com. **Hood**—Berlin Food & Lab Equipment Co.; 877/499-4231; berlinfoodequipment.com. **Wood finishing**—Mac the Antique Plumber, Sacramento, California; 916/454-4507; antiqueplumber.com. **Wine refrigerators in dining island**—Sub-Zero, Inc.; 800/222-7820; subzero.com. **Pizza oven**—Mugnani; 888/887-7208; mugnani.com. **Sink at perimeter, sink at preparation island**—Blanco America, Inc.; 800/451-5782; blancoamerica.com. **Perimeter and island sink faucets**—Tara in Brushed Nickel, **pot filler**—Dombracht USA, Inc.; 800/774-1181; dombrachtusa.com. **Backsplash wall**—fossil blue antique limestone—Sun Marble, Hayward, California; 510/783-9900; sunmarble.com. **Pendant lighting at left of cooktop**—Gulassa Cast Iron Pendant—Sloan Miyasato; 800/783-1398; sloanmiyaso.com. **Recessed lighting**—Mira 2—Leucous USA, Inc.; 800/632-3360; leucoususa.com. **Metal lighting track above preparation island**—Flight Track—Bruck Lighting Systems, Costa Mesa, California; 714/424-0500; brucklighting.com. **Retractable window wall**—Nana Wall; 800/673-5673; nanawall.com. **Window wall hardware**—Vall & Vall USA, Inc.; 877/326-2565; vallwall-us.com. **Ceiling beams**—James Rogers, Concept Development, Orinda, California; 510/406-3217. **Windows**—Supreme Glass Co., Oakland, California; 510/625-8995; supremeglass.net. **Wood bowl**—West Elm; 866/428-6468; westelm.com (product line varies). **Woven baskets with succulents**—Zaragoza, San Anselmo, California; 415/485-5061. **Stock pot**—Crata & Barrel; 800/967-6696; crataandbarrel.com (product line varies). **Glass canisters**—Tyler Florence Shop, Mill Valley, California; 415/380-9200; tylerflorence.com. **Bar stools at preparation island, chairs at dining island**—Crata & Barrel; 800/967-6696; crataandbarrel.com (product line varies). **Television**—ViewSonic; 888/881-8781; viewsonic.com. **Antique bowls at left of refrigerator**—Restoration Hardware; 800/910-9836; restorationhardware.com. **Clear cylinder vase at preparation island**—West Elm; 866/428-6468; westelm.com (product line varies). **Candles and holders**—Pottery Barn; 800/922-5507; potterybarn.com (product line varies).

PAGES 68-75

HIDDEN ASSETS

Designer: Brad Lewis, formerly partner with Balsamo, Olson & Lewis, LTD., One S. 376 Summit Ave., Oakbrook Terrace, IL 60181; 630/629-9800; bolld.com, now with Schwarz Lewis Design Group, Inc., 3410 Hickory Trail, Downers Grove, IL 60515; 630/963-9383; schwarzlewis.com. **Interior designer:** Jeffrey R. Jones, Life Design,

Chicago; 630/674-8020; lifedesignllc.com. **Builder:** Jay Riordan, Riordan Signature Homes, 4130 Ellington Ave., Western Springs, IL 60558; 708/783-1133; riordanhomes.com. **Cabinetry, cabinet and island paint, flooring**—quarter-sawn select oak hardwood—Riordan Signature Homes, Western Springs, Illinois; 708/783-1133; riordanhomes.com. **Wall paint for dining room**—Mount Saint Anne—Benjamin Moore; 888/236-6667; benjaminmoore.com. **Perimeter countertop**—Calacatta marble, **tile in range nook**—Cracked Ceramic—through Materials Marketing; 800/368-3901; mstoneandtile.com. **Range**—Wolf Appliance, Inc.; 800/332-9513; wolfappliance.com. **Perimeter sink**—from the Shaws Original collection—Rohr; 800/777-9762; rohrhome.com. **Island sink**—Frankie Kitchen Systems Division; 800/626-5771; frankiesd.com. **Microwave oven**—Panasonic USA; 800/211-7262; panasonic.com. **Scones at perimeter sink**—through Lightquest, Ltd., Hinsdale, Illinois; 630/655-4454. **Pendants at island**—Chart House Country Industrial in polished nickel, **chandelier at dining table, light fixture in office**—Visual Comfort, Houston; 713/696-5999; visualcomfort.com. **Curtain at sink**—Target Stores; 800/800-8800; target.com (product line varies). **Dining table**—Antiques on Old Plank Road, Westmont, Illinois; 800/887-1995; oldplank.com. **Dining chairs, fabric**—Hickory Chair Co.; 800/349-4579; hickorychair.com. **Windows**—Jeld-Wen, Inc.; 800/535-3836; jeld-wen.com. **Chair in office**—Henredon; 800/444-3682; henredon.com.

PAGES 76-83

CURVES AHEAD

Architect: Glenn Fong, Glenn Chen Fong, AIA, PLLC, 3746 N. Tazewell St., Arlington, VA 22207; 703/538-5080; glennchenfong.com. **Interior designer:** Barry Darr Dixon, Barry Dixon Inc., 8394 Elway Ln., Warrenton, VA 20186; 540/341-8501; barrydixon.com. **Kitchen designer:** Lois Kennedy, CKD, Portfolio Kitchens, Vienna, Virginia; 703/242-0330; portfoliokitchens.com. **Builder:** Alan Cohen, ADC Builders, Inc., 2701 Tower Oak Blvd., Suite 200, Rockville, MD 20852; 301/692-4000; adcbuilders.com. **Cabinetry, mesquite countertops**—Premier Custom-Built, Inc., New Holland, Pennsylvania; 717/354-3059; premierco.com. **Granite countertops, two perimeter sinks in windows**—custom millennium cream granite—GLB Tile and Marble, Alexandria, Virginia; 703/971-4104. **Cabinet hardware**—LB Brass, Ltd.; lbbrass.com. **Backsplash tile**—Walker Zanger; 877/611-0199; walkerzanger.com. **Sink faucets**—Waterworks; 800/998-2284; waterworks.com. **Pot filler**—Grohe America, Inc.; 800/201-3407; groheamerica.com. **Sink on island, sink at perimeter prep area**—Waterworks; 800/998-2284; waterworks.com. **Refrigerator and refrigerator drawers**

integrated with cabinetry—Sub-Zero, Inc.; 800/222-7820; subzero.com. **Range**—Wolf Appliance, Inc.; 800/332-9513; wolfappliance.com. **Pot rack, steel upper range hood, upper island countertop**—Kelly Metalworks, Cocksville, Maryland; 301/854-4848. **Toaster**—Cuisinart; 800/726-0190; cuisinart.com. **Microwave oven**—GE Appliances; 800/626-2000; geappliances.com. **Television**—Samsung; 800/726-7864; samsungusa.com. **Fabric for sink skirt**—China Seas, **chairs in office**—Beaumont & Fletcher—through J. Lambeth & Co., Washington, DC; 202/646-1774; jambeth.com. **Fabric for chairs in office**—Osborne & Little; 212/751-3333; osborneandlittle.com. **Island chairs**—Dennis & Leen—Holly Hunt; 800/446-1313; hollyhunt.com. **Fabric for chair front**—Timothy Paul Carpets & Textiles, Washington, DC; 202/319-1100; timothypaulcarpets.com. **Fabric for chair backs**—Larsen, through Cowtan & Tout, New York City; 212/753-4488 [T]. **Wallpaper on ceiling**—Morris & Co.—through Rist Corp., Washington, DC; 202/646-1540. **Fabrication of draperies and cushions**—Carol Studios, Inc., Fairfax, Virginia; 703/204-2050. **Stool**—Amy Perlin Antiques, New York City; 212/593-5756. **Framed artwork**—Avery Fine Art & Fine Frames; 800/817-0749; averyart.com. **Nesting bowls, utensil holder on range, small pitcher holding flowers**—Randall Tysinger Antiques; 877/524-0080; randalltysinger.com. **Dining room chairs**—Hastening Antiques Ltd., Middleburg, Virginia; 888/415-0371; hasteningantiques.com. **Basket holding artichokes**—Pier 1 Imports; 800/245-4595; pier1.com. **Fabric for curtain draping built-in cupboard**—Winhall—Scalamandré; 800/932-4361; scalamandre.com. **Lamp in office**—Oly; olystudio.com [T].

PAGES 84-91

CENTER OF ATTENTION

Architect and kitchen designer: Mark P. Finlay, Mark P. Finlay Architects, AIA, 96 Old Post Rd., Southport, CT 06890; 203/254-2388; markfinlay.com. **Cabinetry**—custom, **breakfast table**—custom—Johnny Donadic, S. Donadic, Inc., 45-25 39th St., Long Island City, NY; 11104; 718/361-9888; donadic.com. **Wood countertops**—walnut, **flooring**—antique oak—through Mark P. Finlay Architects, AIA, Southport, Connecticut; 203/254-2388; markfinlay.com. **Marble countertops**—New England Stone; 800/229-7866; newenglandstone.com. **Cabinet bin pulls and knobs on lower cabinets**—Schaub & Co., 866/724-2927; schaubandcompany.com. **Upper cabinet hardware**—Canaan Distributors, Stamford, Connecticut; 203/356-1000; canaanistributors.com. **Refrigerator integrated with cabinetry**—Sub-Zero, Inc.; 800/222-7820; subzero.com. **Cooktop, ovens**—Framed Double Wall #D30F3S—Wolf Appliance, Inc.; 800/332-9513; wolfappliance.com.

Microwave oven—Sharp Electronics Corp.; 800/237-4277; sharpusa.com. **Dishwasher**—Miele, Inc.; 800/463-0260; miele.com. **Perimeter sink**—from the Shaws Original collection—Rohr; 800/777-9762; rohrhome.com. **Faucets at perimeter and island sinks**—Royale in polished nickel—Herbeau Creations of America; 800/547-1608; herbeau.com. **Tile behind stove**—Dover White Tile—Ceramic Design Ltd., Westport, Connecticut; 203/454-0032; ceramicdesignltd.com. **Chandeliers over island**—Winston in polished nickel—Remains Lighting, New York City; 212/675-8051; remains.com. **Chandelier over breakfast table**—Menton Hanging Shade—Vaughan Designs, New York City; 212/319-7070; vaughandesigns.com [T]. **Bar stools**—Pottery Barn; 800/922-5507; potterybarn.com (product line varies). **Rug at breakfast table**—custom—Serenity Interior Design, Norwalk, Connecticut; 203/846-0809. **All baskets, copper pot**—Barbara Bourgeois, Main Street Antiques Center, Woodbury, Connecticut; 203/263-0046.

PAGES 92-97

FEMININE FLOURISH

Architect: Chad Nehring, AIA, Nehring & Associates Architecture, LLC, 152 Deer Hill Ave., Suite 304, Danbury, CT 06810; 203/743-4466; nehringarchitects.net. **Interior designer:** Cindy Rinfret, Rinfret, Ltd., 354 Greenwich Ave., Greenwich, CT 06834; 203/622-0000; rinfretltd.com. **Builder:** Frank Usowski, Francis Development, LLC, Old Greenwich, Connecticut; f.usowski@aol.com. **Tile installation**—Jeff Delgado, Clinton, Connecticut. **Tub**—Napoli—Victoria & Albert Bath, LLC, Columbia, South Carolina; 803/748-1228; englishbaths.com. **Sink, faucets**—Kohler Co.; 800/456-4537; us.kohler.com. **Wallpaper**—Poppy & Butterfly—Cowtan & Tout, New York City; 212/647-8900; cowtan.com [T]. **Dressing table, chair**—Hickory Chair Co.; 800/349-4579; hickorychair.com. **Fabric for dressing chair**—Towallie—Holland & Sherry, Inc., New York City; 212/758-1911; hollandandsherry.com. **Trim for dressing chair, fabric for window treatment**—Jig Saw—Krayet; 800/645-9068; krayet.com. **Fabric for window sheer**—Inlet Strie—Lee Jofa; 800/453-3563; leejofa.com [T]. **Light fixture with crystal beads**—John Richard, Greenwood, Mississippi; 662/453-5808; johnrichard.com. **Linen cabinet**—Oly; olystudio.com [T].

PAGES 98-103

INDOOR SAFARI

Architect: Robbie Fusch, president, and Lindsay Fusch Durrett, decorator, Fusch Architects, Inc., 4308 Avondale Ave., Dallas, TX 75219; 214/696-0152; fuscharchitects.com. **Interior designer:** Kristin Muller, Covetable



FOR MORE RESOURCES, VISIT

BESTVALUE.BRANDSOURCE.COM

Designs, Dallas; 214/357-5646; covetabledesigns.com. **Cabinetry**—dark walnut by Wm Ohs, Inc.—Jackson Hole Cabinets and Design Group, Jackson, Wyoming; 307/733-5390. **Countertops**—polished granite in Silver Cloud, **flooring**—polished limestone—Walker Zanger; 877/611-0199; walkerzanger.com. **Tub**—Bateau V in zinc custom finish—The Bathworks; thebathworks.com. **Sinks**—Round #C002—Linkasink; 866/385-8377; linkasink.com. **Sink faucets**—ETL583 in nickel, **bath faucets**—#OMTU02 in nickel—Waterworks; 800/998-2284; waterworks.com. **Wallpaper**—Hudson Chevron Check #LWP22320W—Ralph Lauren Home; 888/475-7674; ralphlaurenhome.com (product line varies). **Scones**—similar items available—Edwina Hunt Lighting, New York City; 212/338-1914; edwinahunt.com. **Chandelier**—Hexagonal Pineapple—Charles Edwards Lighting; charlesedwards.com. **Mirrors**—custom—Barco Mirror & Glass, Inc., Addison, Texas; 972/960-0151; barcoglass.com. **Decorative plates on wall**—John Derian & Co., New York City; 212/677-3917; johnderian.com. **Vintage shutters at tub**—Sentimento Antiques, New York City; 212/750-3111; sentimentoantiques.com. **Vintage fern botanicals**—The Frame House, Dallas; 214/871-5001. **Zebra towels**—Pottery Barn; 800/922-5507; potterybarn.com (product line varies).

PAGES 104-109

LIVABLE LUXURY

Architect: Aldo Di Vitto, Aldo Di Vitto Architect, PC, P.O. Box 8616, Pelham, NY 11083; 914/738-7248; adivitto@msn.com. **Bath designer:** Mel Elton, senior designer, Blotta Kitchens, 564 Mamaroneck Ave., Mamaroneck, NY 10543; 914/381-7734; blotta.com. **Contractor:** John Rockwood, J. Rockwood Contracting Corp., Brewster, New York. **Cabinets**—Blotta Kitchens, Mamaroneck, New York; 914/381-7734; blotta.com. **Shower enclosure, mirrors**—George Distefano, Glassolutions; Newburgh, New York; 845/569-0001; glassolutions.com/commercial.htm. **Cabinet hardware and towel bars**—Crocket Cages in Chalice finish—Carpe Diem Hardware; 888/431-1684; carpediemhardware.com. **Countertops and floor border**—polished Persian pistachio onyx, **floor field tile**—small lace basket weave in polished Thassos with polished Persian pistachio onyx dots—Romstone Fabrication Corp., New Rochelle, New York; 914/654-0161; romstonefabrication.com. **Tile tub surround**—Glimmer Passion Flower by Sciois—through American Tile & Stone, Carrollton, Texas; 972/243-2376; americantileandstone.com. **Tub**—Classic Oval in white with whirlpool—Waterworks; 800/998-2284; waterworks.com. **Sink**—Studio

Undermount Lavatory—American Standard; 800/899-2614; americanstandard-us.com. **Faucets for sink and tub**—Marlin—André Collection; 800/756-2284; andrecollection.net. **Shower faucet**—Private Label collection—Klaiff; 800/552-3371; klaiff.com. **Scones, chandelier**—Schonbek Worldwide Lighting, Inc.; 800/836-1892; schonbek.com. **Vanity stool**—Horchow Home Catalog; 800/456-7000; horchow.com. **Window treatments**—Handy Andy Window Blinds, White Plains, New York; 914/946-4329; handyandyblinds.com.

PAGES 110-115

NATURAL BEAUTY

Architect: James Gabriel, AIA, Architects Hanna Gabriel Wells, 1955 Bacon St., San Diego, CA 92107; 619/523-8485; architects-hgw.com. **Contractor:** Richard Gerace, RGB Group, Inc., 2602 State St., San Diego, CA 92103; 619/293-3377; rgbgroupinc.com. **Cabinetry designer**—Architects Hanna Gabriel Wells, San Diego; 619/523-8485; architects-hgw.com. **Fabrication of cabinets**—Evanko Custom Cabinetry, Inc., El Cajon, California; 619/441-0114. **Countertop**—crema nova limestone—Florentine Co., San Diego; 619/298-6143. **Sink**—Toto USA, Inc.; 800/350-6686; totousa.com. **Sink and tub faucets**—Avoor, shower controls—Hensgrohe; 800/334-0455; hensgrohe-usa.com. **Tub**—Kohler Co.; 800/456-4537; us.kohler.com. **Suspended mirrors**—custom brackets purchased separately—Dombracht USA, Inc.; 800/774-1181; dombrachtusa.com. **Stone floor**—Green Nature—The Five Elements, San Diego; 877/695-2092; thefiveelements.net. **Installation of floor**—Carri Tile & Marble, San Diego; 858/484-8002. **Glass shower enclosure fabrication and installation**—Mirror Shower and Glass, San Diego; 619/558-0901; mirrorshowerandglass.com. **Frosted windows**—Fleetwood Aluminum Products, Inc.; 800/736-7363; fleetwoodusa.com. **Bamboo flooring**—flat grain with caramelized coloring—through RGB Group, Inc., San Diego; 619/293-3377; rgbgroupinc.com.

PAGE 128

FINISHING TOUCHES

Kitchen designer: Jodi Caden, Caden Design Group, 1020 S. Old Woodward Ave., Birmingham, MI 48009; 248/203-6005; cadenesigngroup.com. **Cabinetry**—Caden Design Group, 1020 S. Old Woodward Ave., Birmingham, MI 48009; 248/203-6006; cadenesigngroup.com. **Cabinetry hardware**—Schaub & Co., 866/724-2827; schaubandcompany.com. **Mixer**—Sunbeam Products, Inc.; 800/597-5978; sunbeam.com.

FOR MORE RESOURCES, VISIT



BESTVALUE.BRANDSOURCE.COM